

wildsite



Company Profile

Wildsite Ecological Services Pty. Ltd.

ACN: 103 257 950 - ABN: 47 103 257 950

October 2006

PO Box 1172
Mullumbimby NSW 2482
(02) 6684 6827
andybaker@wildsite.com.au



Introduction

Established on the NSW Far North Coast in 1998, Wildsite Ecological Services Pty. Ltd. is managed by Andy Baker, the principal consultant and founder of the service.

Wildsite is a multi-disciplinary consultancy practice providing innovative, high quality and professional consulting services in ecological assessment, planning and management to the public and private sectors.

We are particularly experienced in the surveying, management and restoration of indigenous plant communities. Whilst most of our projects are handled in-house, we also maintain an extensive network of sub-consultants, bringing together a diverse range of specialists as required by particular projects.



Quality service

The knowledge and experience of the Wildsite team ensures that your project is expertly managed from its inception to the delivery of the final report.

Wildsite is committed to:

- Client liaison throughout the duration of the project
- Financial and time management
- Coordination of project teams and sub-consultants from other professional disciplines
- Integrity, objectivity, ethics, and accuracy

Professional affiliations

Wildsite is associated with the following organisations.

- Australian Association of Bushland Regenerators
- Ecological Society of Australia
- Australian Network for Plant Conservation

Insurances

Wildsite is covered for:

- Professional Indemnity \$10m
- Public Liability \$10m
- Personal Accident Insurance

Licences

Staff are licensed by NSW NPWS (DEC) for field survey work.



Overview

Wildsite offers professional ecological survey, assessment and advice to clients on the north coast of NSW. We can assist you with environmental impact assessment and surveys, planning and management, and GIS analysis and mapping. Wildsite has the professional competence to provide the following services.



- Ecological Survey
- Environmental Impact Assessment
- Restoration Ecology and Bush Regeneration
- Environmental Planning and Management
- Bushfire Risk Assessment and Planning
- GIS Mapping & Analysis
- Environmental Photography

Products

We are specialists in delivering a range of specific conservation documents, products and programs including:

Assessment

- Flora and fauna survey
- 7-part Tests (S.5A EP&A Act)
- Review of Environmental Factors (REF)
- Species Impact Statements (SIS)
- Statement of Environmental Effects (SEE)
- Technical input to Environmental Impact Statements (EIS)
- Geographic Information Systems (GIS) analysis
- Bushfire Assessments

Education

- Environmental Theme Photography
- Presentations
- Scientific and technical reports

- Promotional material
- Information leaflets

Planning & Management

- Biodiversity strategies
- Species management plans
- Plans of management
- Bushfire management plans
- Property Management Plans
- Property Vegetation Plans
- Conservation guidelines
- Local environment studies
- Computer based mapping

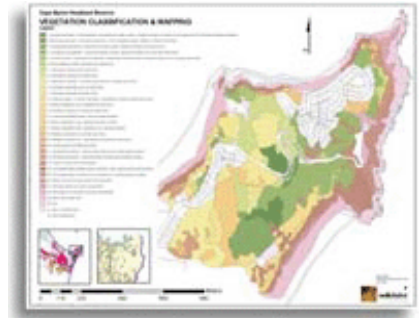


Ecological Survey

Wildsite can conduct extensive field surveys and is experienced in both remnant vegetation survey and remote area fieldwork. Our capabilities range from detailed threatened species' survey and assessment to broad vegetation assessment and mapping.

Ecological survey services include:

- Flora and fauna surveys
- Threatened species survey and monitoring
- Vegetation surveys and mapping
- Digital photography and video survey



With specialised knowledge, the latest taxonomic keys, and specialised digital imaging and microscopic equipment, Wildsite is able accurately identify all groups of vascular flora. Specifically, we have taxonomic skills in the identification of rainforest, sclerophyll forest and heath flora, grasses and introduced plants. Clients may submit specimens to Wildsite for expert identification or we can collect material on site.

Restoration Ecology and Bush Regeneration

Wildsite can provide you with expert advice on the restoration of indigenous plant communities. The principle of Wildsite has over 10 years experience in regeneration and bushland management in a diverse range of vegetation communities along the NSW coast.

Our capabilities include the identification and documentation of threats and issues, including environmental weed survey and monitoring, and vegetation condition assessment and mapping. We are able to provide practical and strategic advice on the treatment of environmental weeds and the regeneration and reconstruction of degraded vegetation.

We can also provide specialist advice on issues relating to threatened species including the amelioration of threats, and the restoration of threatened species' critical habitat and endangered ecological communities.

Specifically our skills include:

- Environmental weed survey and distribution mapping
- Monitoring and management of environmental weeds
- Bushland condition mapping
- Bush regeneration
- Development of regeneration and revegetation plans
- Monitoring of regeneration and revegetation projects
- Management and restoration of threatened species habitat



Environmental Impact Assessment

Wildsite is able to conduct comprehensive flora and fauna assessments for your Review of Environmental Factors (REF) or Environmental Impact Statement (EIS). We can also undertake assessments and planning for threatened species, populations or ecological communities including the preparation of Species Impact Statement (SIS) and recovery plans. Wildsite collaborates with other institutions including the Royal Botanic Gardens, the Australian National Herbarium's Centre for Plant Biodiversity Research and universities to ensure that our assessments are of the highest standard.

Our knowledge and experience enables us to help our clients negotiate their way through complex state and federal environmental legislation, as well as offer expert testimony and review.

Since our establishment in 1998, we have undertaken a range of environmental impact assessment projects for clients including the NSW Department of Environment & Conservation, NSW Department of Land and Water Conservation, Roads and Traffic Authority and Country Energy.



Environmental Planning and Management

Wildsite can provide advice and plans on the management of flora, remnant vegetation and protected areas. We are experienced in the assessment of the diverse range of issues associated with vegetation and protected area management, and have a sound knowledge of available management practices and their effective implementation.

Wildsite has a sound understanding of the management process and can provide you with a clear and concise plan that identifies existing resource issues, outlines desired outcomes and presents guidelines and actions that bring about management objectives.

Recommendations are based on experience, detailed literature reviews, on-site surveys and community consultation and specifically meet the requirements of legislative bodies and consider the needs of all stakeholders.

Wildsite understands the need for adaptive and realistic management and provides practical guidelines and actions that are consistent with financial, staffing and social constraints. We can also develop adaptive mechanisms including monitoring and reporting, to monitor plan implementation and evaluate management effectiveness.

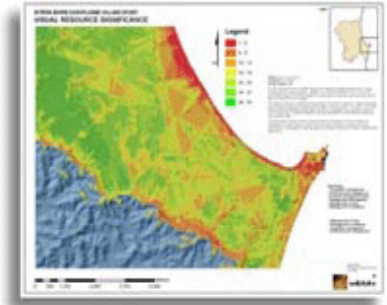
Specifically, Wildsite can provide advice and management plans including:

- Vegetation management plans
- Protected area management plans
- Property management plans
- Management of threatened species, populations and ecological communities
- Management of sites and areas of high conservation value



Geographic Information Systems Mapping & Analysis

Wildsite has an in-house Geographic Information System (ARCGIS) for mapping and analysis of natural resources. Our GIS capabilities are an integral component of many projects and we use the most up to date GIS and Global Positioning System (GPS) technology.



Wildsite can digitise and georeference your existing maps, plans and aerial photographs and collect additional data using GPS in the field. Additionally, Wildsite can arrange the purchase and licensing of specialised data from government departments and private suppliers for analysis and map production.

Our capabilities include detailed spatial analysis of environmental data including species and vegetation distribution modelling, environmental impact assessment and identification of management priorities.

Furthermore, Wildsite can produce detailed thematic maps providing a powerful tool for the visualisation of complex data.

Specifically our spatial analysis and mapping capabilities include:

- Global positioning system (GPS) collection of field data
- Digitising and georeferencing of existing maps, plans and aerial photographs
- Interpretation of aerial photography and satellite imagery
- Spatial analysis of data
- Thematic mapping, including species distribution, bushland condition and vegetation mapping

Bushfire Risk Assessment and Planning

Wildsite can undertake comprehensive bushfire management plans and hazard assessments for developments within bushfire-prone areas. We can provide advice on the layout and design of your site to improve bushfire safety, and to help meet stringent legislative requirements.

Our rapid site assessment techniques ensure a cost effective assessment of potential bushfire risk and determine the minimum building setbacks, site access and the level of construction required for bushfire-safety.

With specialised expertise in vegetation management we can develop solutions for the long term management of any vegetation retained on the site and provide a detailed schedule of works outlining the timing, season and frequency of management activities.

Specifically, Wildsite can provide Bushfire Risk Assessments, Bushfire Management Plans, mapping of building setbacks and Asset Protection Zones, and vegetation management prescriptions for Asset Protection Zones and retained vegetation



Environmental Photography

Wildsite is able to provide you with striking images on a diverse range of environmental themes. We provide specialist skills in nature, wildlife, remote location and technical photography. Whether you require images for educational or promotional material with nature-based themes, natural resource management or science content, we can provide stock or assignment photographs for your project.

